

WKI 300 Anion Resin

WK300 is a strong base anion exchange resin based on a polystyrene matrix with quaternary ammonium type II groups.
WK300 is suited for dealkalizer applications.

OPERATING CONDITIONS

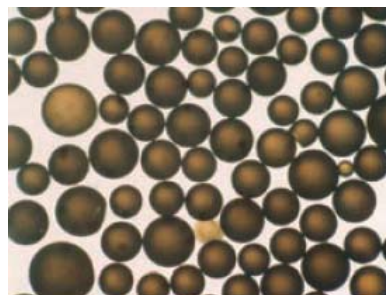
Maximum Operating Temp:	140°F (60°C)
Form:	Shipped in Chloride Form
Resin bed Depth:	24"(600 mm) minimum
Service Flow:	1 to 5 gpm/ft ³ (M3/Hr/M3)
Backwash Expansion space:	50 to 70%
Backwash flow Rate for 50 to 70% expansion at 77°F (25°C)	2 to 4 gpm/ft ² (5 to 10 M3/Hr/M2)
Regenerant:	NaCl for Cl ⁻ form.
Regeneration level:	4 to 8 lbs NaCl/ft ³ (60-160 g NaCl/l)
Regenerant concentration:	5.0 to 15.0% for NaCl
Regeneration flow rate:	
Regeneration time:	20-60 minutes
Fast Rinse:	At service flow rate
Slow Rinse:	At regeneration flow rate
Rinse Volume:	25 to 40 gal/ft ³ (4 to 10 M3/M3)

INFLUENT LIMITATIONS

Free Chlorine:	Not traceable
Turbidity:	Less than 5 N.T.U
Iron and Heavy metals:	Less than 0.1 ppm

WK 100 RESIN CHARACTERISTICS	
Type	Strong base anion resin
Matrix Structure	Polystyrene Copolymer
Functional group	Quaternary Ammonium Type II
Physical form	Moist spherical beads
Ionic form	Hydroxide / Chloride (WK300 is the chloride form)
Particle Size	0.3-1.2mm
Screen Size U.S.S (wet)	16-50
Swelling (approx.)	Cl ⁻ to OH ⁻ : 12%
Moisture content (approx.)	47%
Backwash settled density	43 to 45 lbs/ft ³ (800 to 840 g/l)
Operating pH range	0-14
Solubility	Insoluble in all common solvents
Shipping weight	0.82 Kg/l (approx.) in H ⁺ form 0.86 Kg/l (approx.) in Na ⁺ form

ANION RESIN PACKS							
PART NO	DESCRIPTION	TANK (1)	9x48	10x54	RESIN CUBIC FT	GRAVEL CUBIC FT (2)	WEIGHT POUNDS
479200	RESIN PK	30	10X54	F	1	0.10	70
479201	RESIN PK	45	10X54	F	1 1/3	0.15	90
479202	RESIN PK	50	12X52	F	1 1/2	0.15	90
479203	RESIN PK	70	13X54	F	2 1/4	0.30	150
479204	RESIN PK	100	14X65	F	3 1/4	0.40	210
479205	RESIN PK	120	16X65	F	4	0.55	260
479206	RESIN PK	150	21X62	F	5	1.40	390
479207	RESIN PK	240	24X72	F	8	2	600
479208	RESIN PK	300	30X72	F	10	2 1/2	750
479209	RESIN PK	450	36X72	F	15	3	1050
479221	RESIN PK	120	18X54	S	4	1	300
479222	RESIN PK	150	20X54	S	5	1	350
479223	RESIN PK	180	20X54	S	6	1	400
479224	RESIN PK	200	24X54	S	6 2/3	1 1/2	490
479225	RESIN PK	225	24X54	S	7 1/2	1 1/2	530
479226	RESIN PK	240	24X54	S	8	1 1/2	550
479227	RESIN PK	300	30X60	S	10	2 1/2	750
479228	RESIN PK	450	30X60	S	15	2 1/2	1000
479229	RESIN PK	600	36X60	S	20	3 1/2	1350
479230	RESIN PK	750	36X72	S	25	3 1/2	1600
479231	RESIN PK	900	42X72	S	30	5	2000
479232	RESIN PK	1200	48X72	S	40	11	3100
479233	RESIN PK	1650	54X72	S	55	13	4050
479234	RESIN PK	2100	60X72	S	70	16	5100
479235	RESIN PK	2550	66X72	S	85	21	6350
479236	RESIN PK	3000	72X72	S	100	26	7600
4800	ANION RESIN	WK100	-	-	1	0	52
480012	GRAVEL	#20	-	-	0	1	100
480000	RESIN	PALLET			40	0	2080



% of Alkalinity	4 lbs NaCl Capacity in Kgr/CFT	8 lbs NaCl Capacity in Kgr/CFT
40	2.75	4.0
60	5.0	7.0
80	6.7	9.5
100	9.0	13

Flow rate 1 to 5 gpm/ft³. Use 2.5 for best results.

NOTES:

F - FIBERGLASS OR POLY GLASS TANKS
 S - STEEL TANKS
 GRAVEL WEIGHT IS 100 POUNDS PER
 CUBIC FT.

