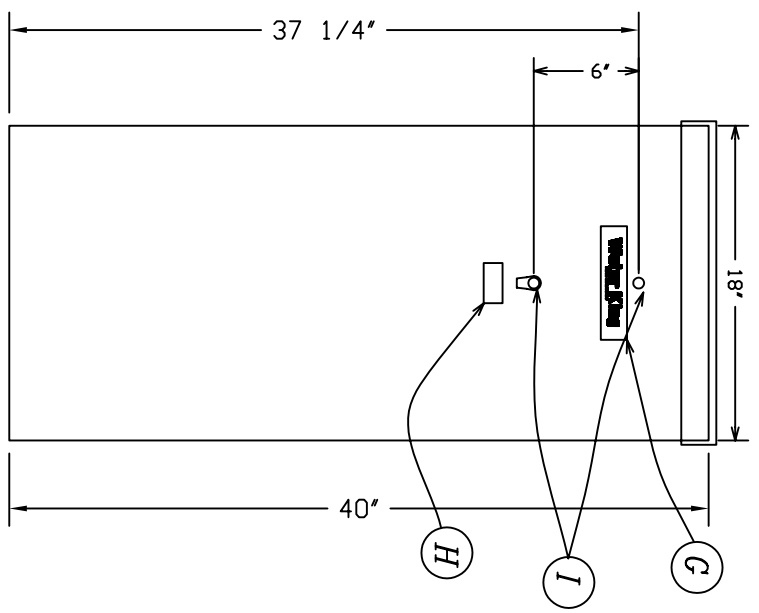
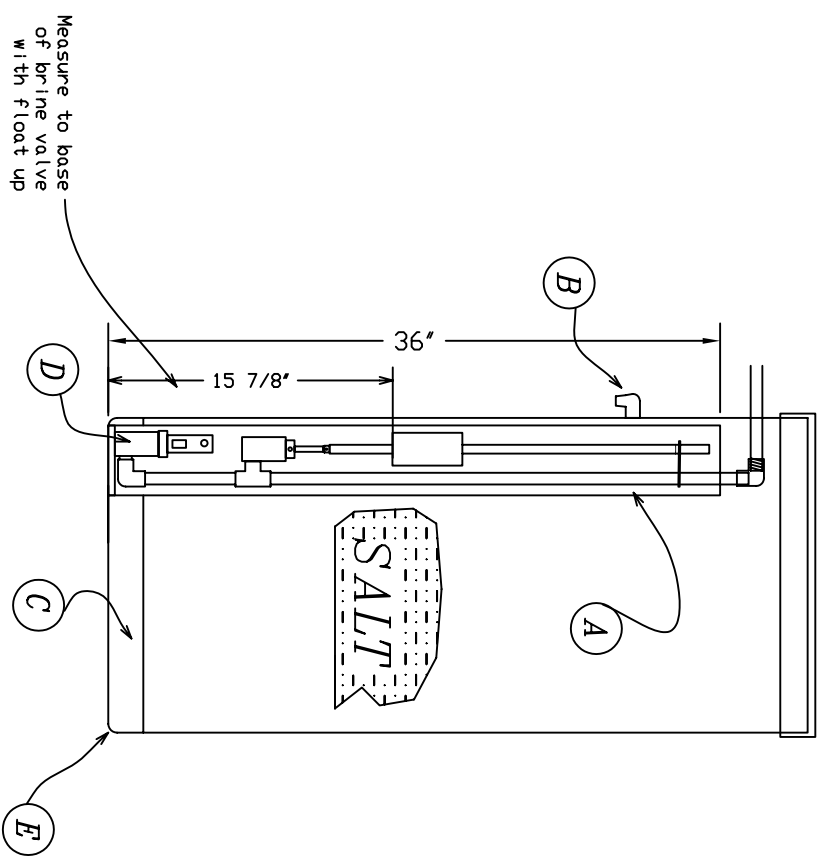


| BILL OF MATERIALS |          | 805061 18" x 40" BRINE TANK ASSY. |      |
|-------------------|----------|-----------------------------------|------|
| ITEM              | PART#    | DESCRIPTION                       | QTY. |
| A                 | 505007   | 4"x36" BRINE WELL ASSEMBLY        | 1    |
| B                 | 200145   | 3/4" OVERFLOW FITTING             | 1    |
| C                 | 480012   | #20 GRAVEL (per LB)               | 30   |
| D                 | 706022-V | 3/4" TOUGH STUFF BRINE VALVE      | 1    |
| E                 | 200010-1 | 18" x 40" BRINE TANK WITH COVER   | 4    |
| G                 | 400258   | WATER KING DECAL - WIDE           | 1    |
| H                 | 401237   | OVERFLOW WARNING LABEL            | 1    |
| I                 | INST     | USE 3/8" DRILL BIT TO DRILL HOLES |      |



RELATED PARTS:  
 200126-1 BRINE LINE ASSY.  
 200442-1 BRINE DIRECTOR ASSY.  
 200441-1 BRINE DIST. ASSY.  
 SALT DRAW: 29 Lbs.  
 SALT STORAGE: 320 Lbs.  
 UNITS SHIPPED WITH:  
 50, 70

| BY: | No. | REVISION    | DATE      | CHK'D |
|-----|-----|-------------|-----------|-------|
|     | 0   | PRELIMINARY | 0/00/2007 |       |
|     | 1   | PRELIMINARY | 4/28/2008 | HM    |

PLOTTED / PRINTED: 2/18/2010

**Water King**  
 WATER CONDITIONING  
 Water King, Inc.  
 102 Charbonnet Rd., Duson, Louisiana, U.S.A. 70528  
 Telephone: (337) 988-2360 • Fax: (337) 981-7922  
 www.waterking.com

|                               |                   |                   |        |
|-------------------------------|-------------------|-------------------|--------|
| 18" x 40" BRINE TANK ASSEMBLY |                   | DR. R. RICHARDSON | ENG.:  |
| DATE                          | FILE              | BY                | SCALE  |
| 00/00/2007                    | C:\CATALOG\805064 | DR. R. RICHARDSON | N.T.S. |
| DRAWING NUMBER                | 805064            | OPERATING WT.     |        |
| SHEET 1 / 1                   |                   |                   |        |