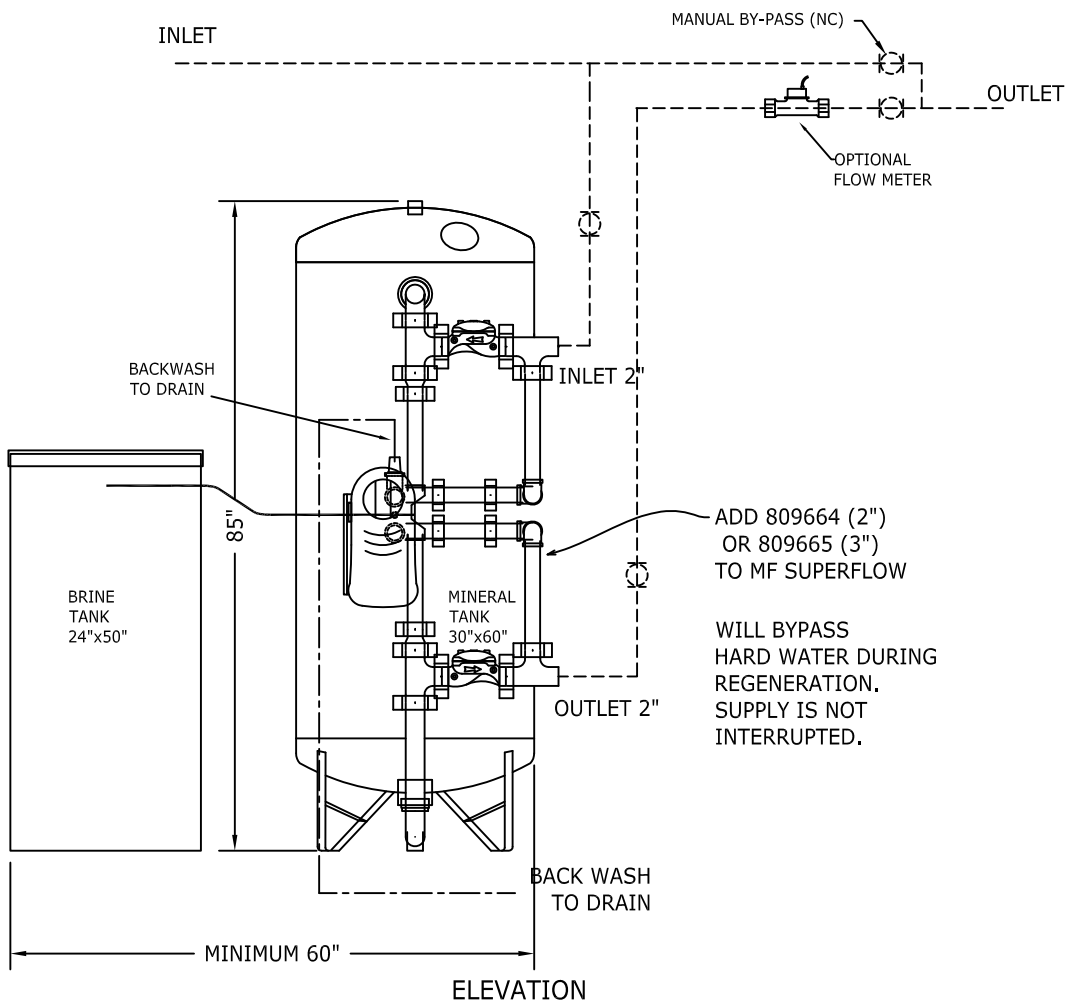


TOP VIEW



NOTES:

- 1) PIPING SHOWN IN DASHED LINES TO BE SUPPLIED BY CUSTOMER.
- 2) ALLOW 1 FOOT ABOVE TANKS FOR LOADING.
- 3) FLOW METER REQUIRES (15) PIPE DIAMETER LENGTHS BEFORE METER & (10) AFTER FOR PROPER OPERATION.
- 4) FLOW METER SHOULD BE MOUNTED HORIZONTALLY.

BY:	No.	REVISION	DATE	CK'D
RLR	0	SUBMITTAL FOR APPROVAL	05/07/2015	JEB
102 Charbonnet Rd., Duson, Louisiana, 70529, U.S.A.				

Water King

921302- MF-300S-2-SX WITH SERVICE FLOW BYPASS GENERAL ARRANGEMENT		
SCALE	DRAWING NUMBER	SHEET
N.T.S.	MF-300S-2-SX-SFBP	01 / 01
www.waterking.com		