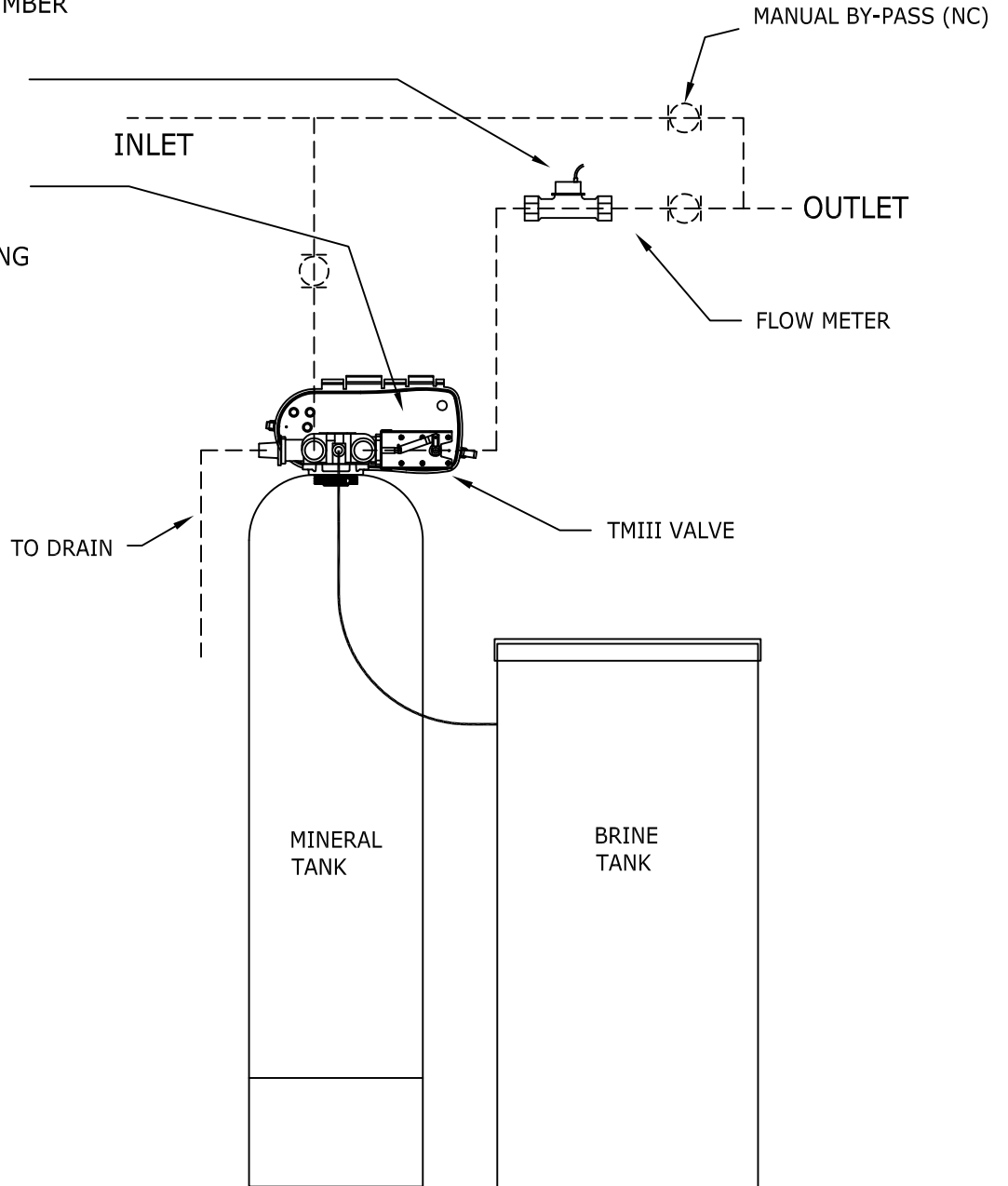


FOR SIMPLEX METERED
 RF / MF SERIES WATER SOFTENERS
 ADD TO RF-SX OR MF-1 1/2"-SX

- 1) ADD "-5" TO THE PART NUMBER
- 2) ADD PW150 FLOW METER
(PART # 500841)
- 3) USE ERCd CONTROLLER
RATHER THAN ERCT
- 4) NOTE INSTALLATION PIPING
BY OTHERS



- NOTES:
- 1) PIPING SHOWN IN DASHED LINES TO BE SUPPLIED BY CUSTOMER.
 - 2) ALLOW 1 FOOT ABOVE TANKS FOR LOADING.
 - 3) FLOW METER REQUIRES (15) PIPE DIAMETER LENGTHS BEFORE METER & (10) AFTER FOR PROPER OPERATION.
 - 4) FLOW METER SHOULD BE MOUNTED HORIZONTALLY.

ELEVATION

BY:	No.	REVISION	DATE	CK'D
RLR	0	SUBMITTAL FOR APPROVAL	05/15/2014	JEB
102 Charbonnet Rd., Duson, Louisiana, 70529, U.S.A.				

Water King

910XX0-5 ADD
 RF-XX-SM
 SIMPLEX METER ADDER

SCALE	DRAWING NUMBER	SHEET
N.T.S.	RF-SM ADD	01 / 01
www.waterking.com		

Telephone: (337) 988-2360 * Fax: (337) 981-7922

J:\Drawings\catalog\RF\RF-SM ADD.dwg, 5/16/2014 10:00:18 AM, Adobe PDF, Letter, 1:16.4474, WATER KING Inc